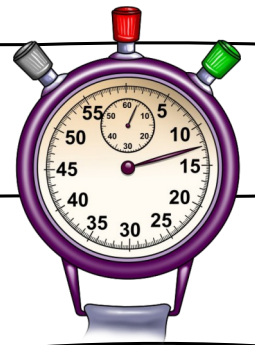


Mathe: Einmaleintraining (5er und 10er Reihe)



10 Minuten - Schnelltest Einmaleins

$2 \cdot 10 = \underline{\quad}$

$5 \cdot 5 = \underline{\quad}$

$3 \cdot 10 = \underline{\quad}$

$1 \cdot 5 = \underline{\quad}$

$1 \cdot 10 = \underline{\quad}$

$3 \cdot 5 = \underline{\quad}$

$4 \cdot 10 = \underline{\quad}$

$4 \cdot 5 = \underline{\quad}$

$2 \cdot 5 = \underline{\quad}$

$6 \cdot 5 = \underline{\quad}$

$7 \cdot 5 = \underline{\quad}$

$7 \cdot 10 = \underline{\quad}$

$8 \cdot 5 = \underline{\quad}$

$10 \cdot 5 = \underline{\quad}$

$6 \cdot 10 = \underline{\quad}$

$10 \cdot 10 = \underline{\quad}$

$8 \cdot 10 = \underline{\quad}$

$9 \cdot 10 = \underline{\quad}$

$2 \cdot 10 = \underline{\quad}$

$1 \cdot 5 = \underline{\quad}$

$1 \cdot 10 = \underline{\quad}$

$8 \cdot 10 = \underline{\quad}$

$4 \cdot 5 = \underline{\quad}$

$2 \cdot 5 = \underline{\quad}$

$7 \cdot 10 = \underline{\quad}$

$6 \cdot 10 = \underline{\quad}$

$10 \cdot 10 = \underline{\quad}$

$7 \cdot 5 = \underline{\quad}$

$6 \cdot 5 = \underline{\quad}$

$9 \cdot 10 = \underline{\quad}$

$9 \cdot 5 = \underline{\quad}$

$3 \cdot 10 = \underline{\quad}$

$5 \cdot 10 = \underline{\quad}$

$3 \cdot 5 = \underline{\quad}$

$5 \cdot 5 = \underline{\quad}$

$10 \cdot 5 = \underline{\quad}$

$4 \cdot 5 = \underline{\quad}$

$2 \cdot 5 = \underline{\quad}$

$6 \cdot 10 = \underline{\quad}$

$8 \cdot 5 = \underline{\quad}$

$2 \cdot 10 = \underline{\quad}$

$9 \cdot 10 = \underline{\quad}$

$9 \cdot 5 = \underline{\quad}$

$1 \cdot 10 = \underline{\quad}$

$5 \cdot 5 = \underline{\quad}$

$3 \cdot 10 = \underline{\quad}$

$5 \cdot 10 = \underline{\quad}$

$6 \cdot 5 = \underline{\quad}$

$3 \cdot 5 = \underline{\quad}$

$4 \cdot 10 = \underline{\quad}$

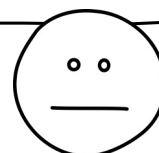
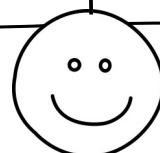
$7 \cdot 5 = \underline{\quad}$

$1 \cdot 5 = \underline{\quad}$

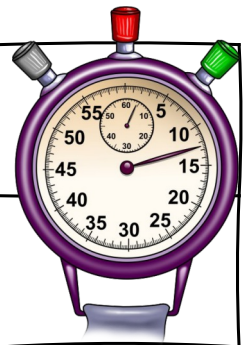
$10 \cdot 5 = \underline{\quad}$

$8 \cdot 10 = \underline{\quad}$

Anzahl richtiger Ergebnisse: _____



Mathe: Einmaleinstraining (5er und 10er Reihe)



10 Minuten - Schnelltest Einmaleins

$___ \cdot 5 = 35$

$___ \cdot 10 = 30$

$___ \cdot 5 = 10$

$___ \cdot 5 = 15$

$___ \cdot 5 = 40$

$___ \cdot 10 = 70$

$___ \cdot 5 = 5$

$___ \cdot 10 = 20$

$___ \cdot 5 = 25$

$___ \cdot 10 = 100$

$___ \cdot 5 = 20$

$___ \cdot 10 = 90$

$___ \cdot 5 = 50$

$___ \cdot 10 = 10$

$___ \cdot 5 = 30$

$___ \cdot 10 = 80$

$___ \cdot 10 = 60$

$___ \cdot 10 = 50$

$___ \cdot 10 = 40$

$___ \cdot 10 = 50$

$___ \cdot 5 = 5$

$___ \cdot 10 = 60$

$___ \cdot 5 = 35$

$___ \cdot 5 = 50$

$___ \cdot 10 = 100$

$___ \cdot 10 = 80$

$___ \cdot 10 = 10$

$___ \cdot 10 = 70$

$___ \cdot 5 = 40$

$___ \cdot 5 = 10$

$___ \cdot 10 = 90$

$___ \cdot 10 = 30$

$___ \cdot 10 = 20$

$___ \cdot 5 = 25$

$___ \cdot 5 = 45$

$___ \cdot 5 = 20$

$___ \cdot 10 = 80$

$___ \cdot 5 = 45$

$___ \cdot 5 = 10$

$___ \cdot 5 = 5$

$___ \cdot 5 = 50$

$___ \cdot 10 = 60$

$___ \cdot 5 = 20$

$___ \cdot 5 = 40$

$___ \cdot 10 = 70$

$___ \cdot 5 = 25$

$___ \cdot 10 = 20$

$___ \cdot 10 = 40$

$___ \cdot 10 = 50$

$___ \cdot 10 = 90$

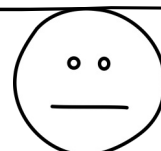
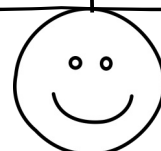
$___ \cdot 5 = 30$

$___ \cdot 5 = 15$

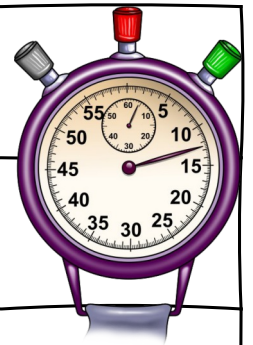
$___ \cdot 10 = 100$

$___ \cdot 10 = 10$

Anzahl richtiger Ergebnisse: _____



Mathe: Einmaleinstraining (5er und 10er Reihe)



10 Minuten - Schnelltest Einmaleins

$10 \cdot \underline{\quad} = 100$

$2 \cdot \underline{\quad} = 10$

$7 \cdot \underline{\quad} = 70$

$1 \cdot \underline{\quad} = 5$

$10 \cdot \underline{\quad} = 50$

$4 \cdot \underline{\quad} = 40$

$1 \cdot \underline{\quad} = 10$

$3 \cdot \underline{\quad} = 15$

$5 \cdot \underline{\quad} = 50$

$8 \cdot \underline{\quad} = 80$

$8 \cdot \underline{\quad} = 40$

$9 \cdot \underline{\quad} = 90$

$7 \cdot \underline{\quad} = 35$

$5 \cdot \underline{\quad} = 25$

$6 \cdot \underline{\quad} = 60$

$2 \cdot \underline{\quad} = 20$

$6 \cdot \underline{\quad} = 30$

$3 \cdot \underline{\quad} = 30$

$5 \cdot \underline{\quad} = 25$

$10 \cdot \underline{\quad} = 100$

$6 \cdot \underline{\quad} = 30$

$4 \cdot \underline{\quad} = 40$

$6 \cdot \underline{\quad} = 60$

$3 \cdot \underline{\quad} = 30$

$1 \cdot \underline{\quad} = 10$

$1 \cdot \underline{\quad} = 5$

$9 \cdot \underline{\quad} = 45$

$9 \cdot \underline{\quad} = 90$

$10 \cdot \underline{\quad} = 50$

$2 \cdot \underline{\quad} = 20$

$3 \cdot \underline{\quad} = 15$

$8 \cdot \underline{\quad} = 40$

$8 \cdot \underline{\quad} = 80$

$4 \cdot \underline{\quad} = 20$

$5 \cdot \underline{\quad} = 50$

$2 \cdot \underline{\quad} = 10$

$2 \cdot \underline{\quad} = 10$

$7 \cdot \underline{\quad} = 70$

$1 \cdot \underline{\quad} = 5$

$3 \cdot \underline{\quad} = 15$

$6 \cdot \underline{\quad} = 60$

$9 \cdot \underline{\quad} = 45$

$4 \cdot \underline{\quad} = 40$

$7 \cdot \underline{\quad} = 35$

$5 \cdot \underline{\quad} = 50$

$6 \cdot \underline{\quad} = 30$

$10 \cdot \underline{\quad} = 100$

$4 \cdot \underline{\quad} = 20$

$2 \cdot \underline{\quad} = 20$

$8 \cdot \underline{\quad} = 80$

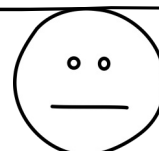
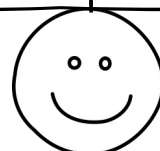
$8 \cdot \underline{\quad} = 40$

$10 \cdot \underline{\quad} = 50$

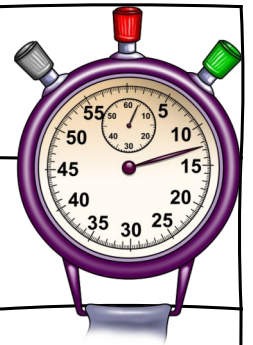
$9 \cdot \underline{\quad} = 90$

$3 \cdot \underline{\quad} = 30$

Anzahl richtiger Ergebnisse: _____



Mathe: Einmaleinsübung (5er und 10er Reihe)



10 Minuten - Schnelltest Einmaleins

$___ \cdot 10 = 80$

$7 \cdot 10 = ___$

$___ \cdot 10 = 10$

$3 \cdot 10 = ___$

$___ \cdot 10 = 20$

$___ \cdot 5 = 50$

$5 \cdot 10 = ___$

$9 \cdot ___ = 45$

$___ \cdot 5 = 30$

$___ \cdot 5 = 40$

$___ \cdot 5 = 35$

$___ \cdot 10 = 60$

$9 \cdot ___ = 90$

$___ \cdot 10 = 100$

$3 \cdot ___ = 15$

$2 \cdot 5 = ___$

$___ \cdot 5 = 25$

$___ \cdot 5 = 5$

$5 \cdot ___ = 25$

$2 \cdot ___ = 20$

$___ \cdot 10 = 70$

$8 \cdot 10 = ___$

$10 \cdot ___ = 100$

$6 \cdot 5 = ___$

$9 \cdot 10 = ___$

$1 \cdot ___ = 5$

$___ \cdot 5 = 45$

$4 \cdot 10 = ___$

$5 \cdot 10 = ___$

$3 \cdot ___ = 15$

$2 \cdot 5 = ___$

$___ \cdot 10 = 60$

$___ \cdot 5 = 40$

$10 \cdot 5 = ___$

$4 \cdot 5 = ___$

$1 \cdot 10 = ___$

$___ \cdot 10 = 20$

$___ \cdot 5 = 30$

$10 \cdot ___ = 50$

$10 \cdot ___ = 100$

$___ \cdot 10 = 10$

$6 \cdot ___ = 60$

$5 \cdot ___ = 50$

$7 \cdot ___ = 35$

$2 \cdot 5 = ___$

$___ \cdot 5 = 40$

$___ \cdot 10 = 90$

$___ \cdot 5 = 15$

$4 \cdot ___ = 20$

$___ \cdot 5 = 25$

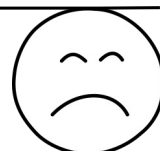
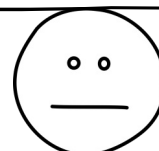
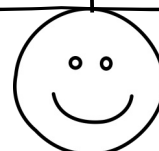
$___ \cdot 10 = 70$

$3 \cdot ___ = 30$

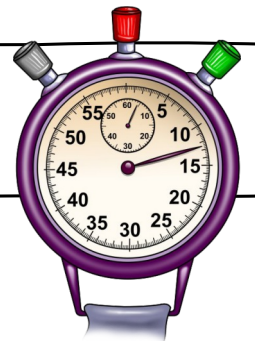
$___ \cdot 5 = 45$

$___ \cdot 5 = 5$

Anzahl richtiger Ergebnisse: _____



Mathe: Einmaleinstraining (5er und 10er Reihe)



10 Minuten - Schnelltest Einmaleins

$2 \cdot 10 = \underline{20}$

$5 \cdot 5 = \underline{25}$

$3 \cdot 10 = \underline{30}$

$1 \cdot 5 = \underline{5}$

$1 \cdot 10 = \underline{10}$

$3 \cdot 5 = \underline{15}$

$4 \cdot 10 = \underline{40}$

$4 \cdot 5 = \underline{20}$

$2 \cdot 5 = \underline{10}$

$6 \cdot 5 = \underline{30}$

$7 \cdot 5 = \underline{35}$

$7 \cdot 10 = \underline{70}$

$8 \cdot 5 = \underline{40}$

$10 \cdot 5 = \underline{50}$

$6 \cdot 10 = \underline{60}$

$10 \cdot 10 = \underline{100}$

$8 \cdot 10 = \underline{80}$

$9 \cdot 10 = \underline{90}$

$2 \cdot 10 = \underline{20}$

$1 \cdot 5 = \underline{5}$

$1 \cdot 10 = \underline{10}$

$8 \cdot 10 = \underline{80}$

$4 \cdot 5 = \underline{20}$

$2 \cdot 5 = \underline{10}$

$7 \cdot 10 = \underline{70}$

$6 \cdot 10 = \underline{60}$

$10 \cdot 10 = \underline{100}$

$7 \cdot 5 = \underline{35}$

$6 \cdot 5 = \underline{30}$

$9 \cdot 10 = \underline{90}$

$9 \cdot 5 = \underline{45}$

$3 \cdot 10 = \underline{30}$

$5 \cdot 10 = \underline{50}$

$3 \cdot 5 = \underline{15}$

$5 \cdot 5 = \underline{25}$

$10 \cdot 5 = \underline{50}$

$4 \cdot 5 = \underline{20}$

$2 \cdot 5 = \underline{10}$

$6 \cdot 10 = \underline{60}$

$8 \cdot 5 = \underline{40}$

$2 \cdot 10 = \underline{20}$

$9 \cdot 10 = \underline{90}$

$9 \cdot 5 = \underline{45}$

$1 \cdot 10 = \underline{10}$

$5 \cdot 5 = \underline{25}$

$3 \cdot 10 = \underline{30}$

$5 \cdot 10 = \underline{50}$

$6 \cdot 5 = \underline{30}$

$3 \cdot 5 = \underline{15}$

$4 \cdot 10 = \underline{40}$

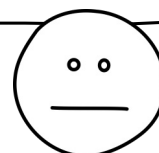
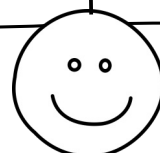
$7 \cdot 5 = \underline{35}$

$1 \cdot 5 = \underline{5}$

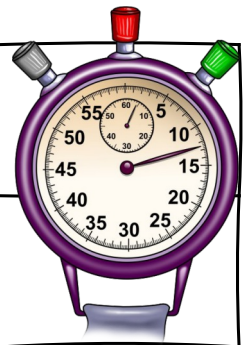
$10 \cdot 5 = \underline{50}$

$8 \cdot 10 = \underline{80}$

Anzahl richtiger Ergebnisse: _____



Mathe: Einmaleinstraining (5er und 10er Reihe)



10 Minuten - Schnelltest Einmaleins

$7 \cdot 5 = 35$

$3 \cdot 10 = 30$

$2 \cdot 5 = 10$

$3 \cdot 5 = 15$

$8 \cdot 5 = 40$

$7 \cdot 10 = 70$

$1 \cdot 5 = 5$

$2 \cdot 10 = 20$

$5 \cdot 5 = 25$

$10 \cdot 10 = 100$

$4 \cdot 5 = 20$

$9 \cdot 10 = 90$

$10 \cdot 5 = 50$

$1 \cdot 10 = 10$

$6 \cdot 5 = 30$

$8 \cdot 10 = 80$

$6 \cdot 10 = 60$

$5 \cdot 10 = 50$

$4 \cdot 10 = 40$

$5 \cdot 10 = 50$

$1 \cdot 5 = 5$

$6 \cdot 10 = 60$

$7 \cdot 5 = 35$

$10 \cdot 5 = 50$

$10 \cdot 10 = 100$

$8 \cdot 10 = 80$

$1 \cdot 10 = 10$

$7 \cdot 10 = 70$

$8 \cdot 5 = 40$

$2 \cdot 5 = 10$

$9 \cdot 10 = 90$

$3 \cdot 10 = 30$

$2 \cdot 10 = 20$

$5 \cdot 5 = 25$

$9 \cdot 5 = 45$

$4 \cdot 5 = 20$

$8 \cdot 10 = 80$

$9 \cdot 5 = 45$

$2 \cdot 5 = 10$

$1 \cdot 5 = 5$

$10 \cdot 5 = 50$

$6 \cdot 10 = 60$

$4 \cdot 5 = 20$

$8 \cdot 5 = 40$

$7 \cdot 10 = 70$

$5 \cdot 5 = 25$

$2 \cdot 10 = 20$

$4 \cdot 10 = 40$

$5 \cdot 10 = 50$

$9 \cdot 10 = 90$

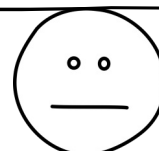
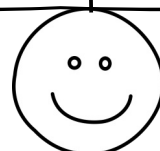
$6 \cdot 5 = 30$

$3 \cdot 5 = 15$

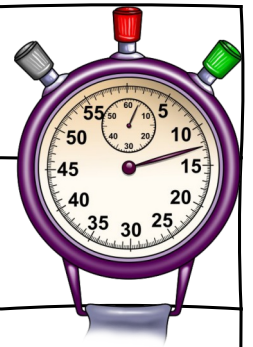
$10 \cdot 10 = 100$

$1 \cdot 10 = 10$

Anzahl richtiger Ergebnisse: _____



Mathe: Einmaleinstraining (5er und 10er Reihe)



10 Minuten - Schnelltest Einmaleins

$10 \cdot \underline{10} = 100$

$2 \cdot \underline{5} = 10$

$7 \cdot \underline{10} = 70$

$1 \cdot \underline{5} = 5$

$10 \cdot \underline{5} = 50$

$4 \cdot \underline{10} = 40$

$1 \cdot \underline{10} = 10$

$3 \cdot \underline{5} = 15$

$5 \cdot \underline{10} = 50$

$8 \cdot \underline{10} = 80$

$8 \cdot \underline{5} = 40$

$9 \cdot \underline{10} = 90$

$7 \cdot \underline{5} = 35$

$5 \cdot \underline{5} = 25$

$6 \cdot \underline{10} = 60$

$2 \cdot \underline{10} = 20$

$6 \cdot \underline{5} = 30$

$3 \cdot \underline{10} = 30$

$5 \cdot \underline{5} = 25$

$10 \cdot \underline{10} = 100$

$6 \cdot \underline{5} = 30$

$4 \cdot \underline{10} = 40$

$6 \cdot \underline{10} = 60$

$3 \cdot \underline{10} = 30$

$1 \cdot \underline{10} = 10$

$1 \cdot \underline{5} = 5$

$9 \cdot \underline{5} = 45$

$9 \cdot \underline{10} = 90$

$10 \cdot \underline{5} = 50$

$2 \cdot \underline{10} = 20$

$3 \cdot \underline{5} = 15$

$8 \cdot \underline{5} = 40$

$8 \cdot \underline{10} = 80$

$4 \cdot \underline{5} = 20$

$5 \cdot \underline{10} = 50$

$2 \cdot \underline{5} = 10$

$2 \cdot \underline{5} = 10$

$7 \cdot \underline{10} = 70$

$1 \cdot \underline{5} = 5$

$3 \cdot \underline{5} = 15$

$6 \cdot \underline{10} = 60$

$9 \cdot \underline{5} = 45$

$4 \cdot \underline{10} = 40$

$7 \cdot \underline{5} = 35$

$5 \cdot \underline{10} = 50$

$6 \cdot \underline{5} = 30$

$10 \cdot \underline{10} = 100$

$4 \cdot \underline{5} = 20$

$2 \cdot \underline{10} = 20$

$8 \cdot \underline{10} = 80$

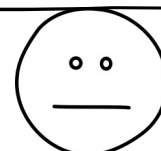
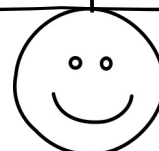
$8 \cdot \underline{5} = 40$

$10 \cdot \underline{5} = 50$

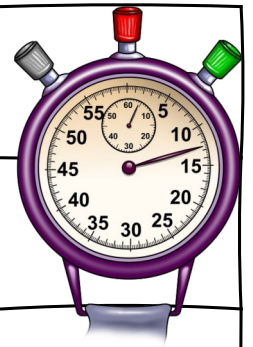
$9 \cdot \underline{10} = 90$

$3 \cdot \underline{10} = 30$

Anzahl richtiger Ergebnisse: _____



Mathe: Einmaleinsübung (5er und 10er Reihe)



10 Minuten - Schnelltest Einmaleins

$8 \cdot 10 = 80$

$7 \cdot 10 = 70$

$1 \cdot 10 = 10$

$3 \cdot 10 = 30$

$2 \cdot 10 = 20$

$10 \cdot 5 = 50$

$5 \cdot 10 = 50$

$9 \cdot 5 = 45$

$6 \cdot 5 = 30$

$8 \cdot 5 = 40$

$7 \cdot 5 = 35$

$6 \cdot 10 = 60$

$9 \cdot 10 = 90$

$10 \cdot 10 = 100$

$3 \cdot 5 = 15$

$2 \cdot 5 = 10$

$5 \cdot 5 = 25$

$1 \cdot 5 = 5$

$5 \cdot 5 = 25$

$2 \cdot 10 = 20$

$7 \cdot 10 = 70$

$8 \cdot 10 = 80$

$10 \cdot 10 = 100$

$6 \cdot 5 = 30$

$9 \cdot 10 = 90$

$1 \cdot 5 = 5$

$9 \cdot 5 = 45$

$4 \cdot 10 = 40$

$5 \cdot 10 = 50$

$3 \cdot 5 = 15$

$2 \cdot 5 = 10$

$6 \cdot 10 = 60$

$8 \cdot 5 = 40$

$10 \cdot 5 = 50$

$4 \cdot 5 = 20$

$1 \cdot 10 = 10$

$2 \cdot 10 = 20$

$6 \cdot 5 = 30$

$10 \cdot 5 = 50$

$10 \cdot 10 = 100$

$1 \cdot 10 = 10$

$6 \cdot 10 = 60$

$5 \cdot 10 = 50$

$7 \cdot 5 = 35$

$2 \cdot 5 = 10$

$8 \cdot 5 = 40$

$9 \cdot 10 = 90$

$3 \cdot 5 = 15$

$4 \cdot 5 = 20$

$5 \cdot 5 = 25$

$7 \cdot 10 = 70$

$3 \cdot 10 = 30$

$9 \cdot 5 = 45$

$1 \cdot 5 = 5$

Anzahl richtiger Ergebnisse: _____

