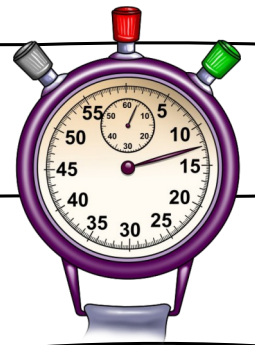


Mathe: Einmaleintraining (2er, 4er und 8er Reihe)



10 Minuten - Schnelltest Einmaleins

$3 \cdot 8 = \underline{\quad}$

$6 \cdot 8 = \underline{\quad}$

$10 \cdot 2 = \underline{\quad}$

$9 \cdot 2 = \underline{\quad}$

$8 \cdot 8 = \underline{\quad}$

$4 \cdot 4 = \underline{\quad}$

$6 \cdot 2 = \underline{\quad}$

$10 \cdot 8 = \underline{\quad}$

$1 \cdot 8 = \underline{\quad}$

$6 \cdot 4 = \underline{\quad}$

$7 \cdot 4 = \underline{\quad}$

$7 \cdot 2 = \underline{\quad}$

$2 \cdot 2 = \underline{\quad}$

$3 \cdot 2 = \underline{\quad}$

$5 \cdot 4 = \underline{\quad}$

$1 \cdot 4 = \underline{\quad}$

$2 \cdot 4 = \underline{\quad}$

$4 \cdot 8 = \underline{\quad}$

$1 \cdot 4 = \underline{\quad}$

$5 \cdot 8 = \underline{\quad}$

$8 \cdot 4 = \underline{\quad}$

$10 \cdot 2 = \underline{\quad}$

$4 \cdot 8 = \underline{\quad}$

$8 \cdot 8 = \underline{\quad}$

$5 \cdot 4 = \underline{\quad}$

$6 \cdot 8 = \underline{\quad}$

$2 \cdot 8 = \underline{\quad}$

$7 \cdot 8 = \underline{\quad}$

$9 \cdot 2 = \underline{\quad}$

$7 \cdot 2 = \underline{\quad}$

$10 \cdot 4 = \underline{\quad}$

$9 \cdot 8 = \underline{\quad}$

$3 \cdot 2 = \underline{\quad}$

$10 \cdot 8 = \underline{\quad}$

$1 \cdot 8 = \underline{\quad}$

$7 \cdot 4 = \underline{\quad}$

$5 \cdot 4 = \underline{\quad}$

$9 \cdot 8 = \underline{\quad}$

$6 \cdot 8 = \underline{\quad}$

$7 \cdot 2 = \underline{\quad}$

$6 \cdot 4 = \underline{\quad}$

$1 \cdot 4 = \underline{\quad}$

$10 \cdot 8 = \underline{\quad}$

$4 \cdot 8 = \underline{\quad}$

$8 \cdot 4 = \underline{\quad}$

$5 \cdot 8 = \underline{\quad}$

$8 \cdot 8 = \underline{\quad}$

$4 \cdot 2 = \underline{\quad}$

$4 \cdot 4 = \underline{\quad}$

$7 \cdot 4 = \underline{\quad}$

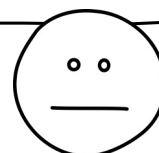
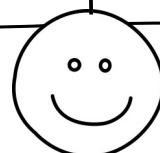
$3 \cdot 8 = \underline{\quad}$

$2 \cdot 4 = \underline{\quad}$

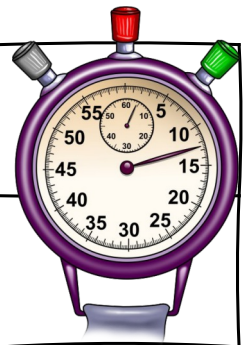
$7 \cdot 8 = \underline{\quad}$

$9 \cdot 2 = \underline{\quad}$

Anzahl richtiger Ergebnisse: _____



Mathe: Einmaleinstraining (5er und 10er Reihe)



10 Minuten - Schnelltest Einmaleins

$___ \cdot 2 = 10$

$___ \cdot 8 = 8$

$___ \cdot 8 = 80$

$___ \cdot 8 = 24$

$___ \cdot 8 = 32$

$___ \cdot 8 = 64$

$___ \cdot 2 = 12$

$___ \cdot 4 = 4$

$___ \cdot 2 = 16$

$___ \cdot 4 = 16$

$___ \cdot 2 = 14$

$___ \cdot 4 = 8$

$___ \cdot 2 = 20$

$___ \cdot 8 = 16$

$___ \cdot 4 = 24$

$___ \cdot 8 = 48$

$___ \cdot 4 = 40$

$___ \cdot 8 = 40$

$___ \cdot 4 = 8$

$___ \cdot 2 = 6$

$___ \cdot 2 = 14$

$___ \cdot 8 = 16$

$___ \cdot 8 = 24$

$___ \cdot 4 = 36$

$___ \cdot 4 = 24$

$___ \cdot 4 = 20$

$___ \cdot 4 = 28$

$___ \cdot 8 = 80$

$___ \cdot 4 = 4$

$___ \cdot 8 = 56$

$___ \cdot 8 = 72$

$___ \cdot 2 = 18$

$___ \cdot 8 = 64$

$___ \cdot 2 = 2$

$___ \cdot 8 = 48$

$___ \cdot 2 = 4$

$___ \cdot 4 = 32$

$___ \cdot 8 = 16$

$___ \cdot 8 = 80$

$___ \cdot 4 = 28$

$___ \cdot 8 = 72$

$___ \cdot 8 = 8$

$___ \cdot 2 = 20$

$___ \cdot 2 = 18$

$___ \cdot 8 = 40$

$___ \cdot 2 = 8$

$___ \cdot 4 = 20$

$___ \cdot 8 = 32$

$___ \cdot 4 = 16$

$___ \cdot 8 = 64$

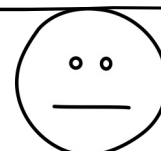
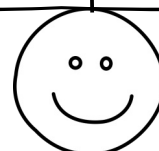
$___ \cdot 8 = 48$

$___ \cdot 2 = 10$

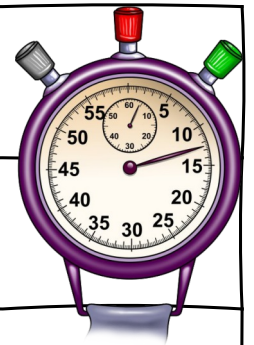
$___ \cdot 4 = 36$

$___ \cdot 2 = 14$

Anzahl richtiger Ergebnisse: _____



Mathe: Einmaleintraining (5er und 10er Reihe)



10 Minuten - Schnelltest Einmaleins

$9 \cdot _ = 36$

$6 \cdot _ = 12$

$5 \cdot _ = 40$

$2 \cdot _ = 8$

$7 \cdot _ = 14$

$10 \cdot _ = 40$

$4 \cdot _ = 8$

$2 \cdot _ = 4$

$4 \cdot _ = 16$

$6 \cdot _ = 48$

$4 \cdot _ = 32$

$8 \cdot _ = 16$

$1 \cdot _ = 8$

$9 \cdot _ = 72$

$7 \cdot _ = 28$

$1 \cdot _ = 2$

$10 \cdot _ = 80$

$9 \cdot _ = 18$

$4 \cdot _ = 32$

$6 \cdot _ = 48$

$9 \cdot _ = 18$

$6 \cdot _ = 24$

$1 \cdot _ = 8$

$5 \cdot _ = 20$

$3 \cdot _ = 12$

$9 \cdot _ = 36$

$8 \cdot _ = 32$

$2 \cdot _ = 8$

$8 \cdot _ = 16$

$3 \cdot _ = 24$

$9 \cdot _ = 72$

$2 \cdot _ = 4$

$7 \cdot _ = 28$

$5 \cdot _ = 40$

$3 \cdot _ = 6$

$7 \cdot _ = 56$

$2 \cdot _ = 16$

$6 \cdot _ = 48$

$7 \cdot _ = 56$

$1 \cdot _ = 4$

$8 \cdot _ = 16$

$9 \cdot _ = 72$

$9 \cdot _ = 36$

$1 \cdot _ = 2$

$6 \cdot _ = 24$

$1 \cdot _ = 8$

$4 \cdot _ = 32$

$7 \cdot _ = 28$

$6 \cdot _ = 12$

$4 \cdot _ = 16$

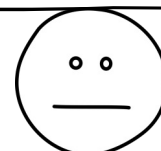
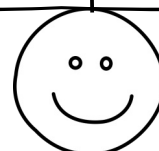
$3 \cdot _ = 12$

$2 \cdot _ = 8$

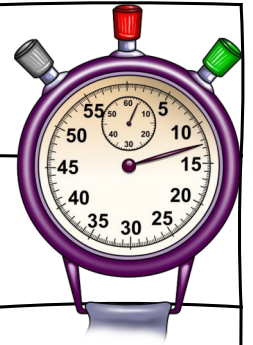
$9 \cdot _ = 18$

$7 \cdot _ = 14$

Anzahl richtiger Ergebnisse: _____



Mathe: Einmaleinsübung (5er und 10er Reihe)



10 Minuten - Schnelltest Einmaleins

$10 \cdot 4 = \underline{\quad}$

$1 \cdot 8 = \underline{\quad}$

$\underline{\quad} \cdot 2 = 4$

$\underline{\quad} \cdot 4 = 12$

$9 \cdot 4 = \underline{\quad}$

$9 \cdot \underline{\quad} = 72$

$\underline{\quad} \cdot 2 = 8$

$3 \cdot 8 = \underline{\quad}$

$7 \cdot \underline{\quad} = 28$

$7 \cdot \underline{\quad} = 14$

$5 \cdot 2 = \underline{\quad}$

$1 \cdot \underline{\quad} = 4$

$\underline{\quad} \cdot 4 = 20$

$\underline{\quad} \cdot 8 = 80$

$\underline{\quad} \cdot 8 = 48$

$6 \cdot \underline{\quad} = 24$

$2 \cdot 4 = \underline{\quad}$

$\underline{\quad} \cdot 8 = 56$

$\underline{\quad} \cdot 4 = 16$

$\underline{\quad} \cdot 2 = 14$

$2 \cdot 8 = \underline{\quad}$

$8 \cdot \underline{\quad} = 64$

$\underline{\quad} \cdot 8 = 56$

$9 \cdot 8 = \underline{\quad}$

$3 \cdot \underline{\quad} = 6$

$\underline{\quad} \cdot 4 = 40$

$1 \cdot \underline{\quad} = 2$

$1 \cdot \underline{\quad} = 4$

$\underline{\quad} \cdot 2 = 10$

$\underline{\quad} \cdot 2 = 8$

$9 \cdot \underline{\quad} = 18$

$\underline{\quad} \cdot 2 = 20$

$6 \cdot 2 = \underline{\quad}$

$5 \cdot \underline{\quad} = 20$

$2 \cdot \underline{\quad} = 4$

$\underline{\quad} \cdot 8 = 32$

$\underline{\quad} \cdot 8 = 24$

$6 \cdot \underline{\quad} = 24$

$\underline{\quad} \cdot 4 = 40$

$2 \cdot \underline{\quad} = 4$

$\underline{\quad} \cdot 8 = 72$

$10 \cdot 2 = \underline{\quad}$

$9 \cdot 2 = \underline{\quad}$

$7 \cdot 8 = \underline{\quad}$

$3 \cdot \underline{\quad} = 12$

$8 \cdot 8 = \underline{\quad}$

$1 \cdot 4 = \underline{\quad}$

$5 \cdot \underline{\quad} = 40$

$5 \cdot 2 = \underline{\quad}$

$2 \cdot 4 = \underline{\quad}$

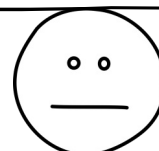
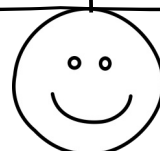
$\underline{\quad} \cdot 2 = 6$


$\underline{\quad} \cdot 4 = 16$

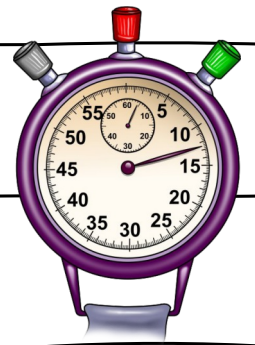
$6 \cdot 8 = \underline{\quad}$

$8 \cdot \underline{\quad} = 16$

Anzahl richtiger Ergebnisse: _____



Mathe: Einmaleintraining (2er, 4er und 8er Reihe) 



10 Minuten - Schnelltest Einmaleins

$3 \cdot 8 = \underline{24}$

$6 \cdot 8 = \underline{48}$

$10 \cdot 2 = \underline{20}$

$9 \cdot 2 = \underline{18}$

$8 \cdot 8 = \underline{64}$

$4 \cdot 4 = \underline{16}$

$6 \cdot 2 = \underline{12}$

$10 \cdot 8 = \underline{80}$

$1 \cdot 8 = \underline{8}$

$6 \cdot 4 = \underline{24}$

$7 \cdot 4 = \underline{28}$

$7 \cdot 2 = \underline{14}$

$2 \cdot 2 = \underline{4}$

$3 \cdot 2 = \underline{6}$

$5 \cdot 4 = \underline{20}$

$1 \cdot 4 = \underline{4}$

$2 \cdot 4 = \underline{8}$

$4 \cdot 8 = \underline{32}$

$1 \cdot 4 = \underline{4}$

$5 \cdot 8 = \underline{40}$

$8 \cdot 4 = \underline{32}$

$10 \cdot 2 = \underline{20}$

$4 \cdot 8 = \underline{32}$

$8 \cdot 8 = \underline{64}$

$5 \cdot 4 = \underline{20}$

$6 \cdot 8 = \underline{48}$

$2 \cdot 8 = \underline{16}$

$7 \cdot 8 = \underline{56}$

$9 \cdot 2 = \underline{18}$

$7 \cdot 2 = \underline{14}$

$10 \cdot 4 = \underline{40}$

$9 \cdot 8 = \underline{72}$

$3 \cdot 2 = \underline{6}$

$10 \cdot 8 = \underline{80}$

$1 \cdot 8 = \underline{8}$

$7 \cdot 4 = \underline{28}$

$5 \cdot 4 = \underline{20}$

$9 \cdot 8 = \underline{72}$

$6 \cdot 8 = \underline{48}$

$7 \cdot 2 = \underline{14}$

$6 \cdot 4 = \underline{24}$

$1 \cdot 4 = \underline{4}$

$10 \cdot 8 = \underline{80}$

$4 \cdot 8 = \underline{32}$

$8 \cdot 4 = \underline{32}$

$5 \cdot 8 = \underline{40}$

$8 \cdot 8 = \underline{64}$

$4 \cdot 2 = \underline{8}$

$4 \cdot 4 = \underline{16}$

$7 \cdot 4 = \underline{28}$

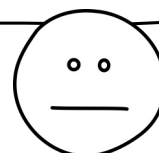
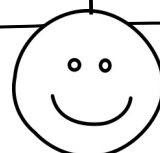
$3 \cdot 8 = \underline{24}$

$2 \cdot 4 = \underline{8}$

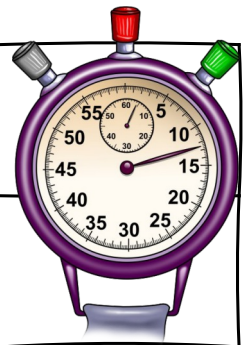
$7 \cdot 8 = \underline{56}$

$9 \cdot 2 = \underline{18}$

Anzahl richtiger Ergebnisse: _____



Mathe: Einmaleintraining (5er und 10er Reihe)



10 Minuten - Schnelltest Einmaleins

$$\underline{5} \cdot 2 = 10$$

$$\underline{1} \cdot 8 = 8$$

$$\underline{10} \cdot 8 = 80$$

$$\underline{3} \cdot 8 = 24$$

$$\underline{4} \cdot 8 = 32$$

$$\underline{8} \cdot 8 = 64$$

$$\underline{6} \cdot 2 = 12$$

$$\underline{1} \cdot 4 = 4$$

$$\underline{8} \cdot 2 = 16$$

$$\underline{4} \cdot 4 = 16$$

$$\underline{7} \cdot 2 = 14$$

$$\underline{2} \cdot 4 = 8$$

$$\underline{10} \cdot 2 = 20$$

$$\underline{2} \cdot 8 = 16$$

$$\underline{6} \cdot 4 = 24$$

$$\underline{6} \cdot 8 = 48$$

$$\underline{10} \cdot 4 = 40$$

$$\underline{5} \cdot 8 = 40$$

$$\underline{2} \cdot 4 = 8$$

$$\underline{3} \cdot 2 = 6$$

$$\underline{7} \cdot 2 = 14$$

$$\underline{2} \cdot 8 = 16$$

$$\underline{3} \cdot 8 = 24$$

$$\underline{9} \cdot 4 = 36$$

$$\underline{6} \cdot 4 = 24$$

$$\underline{5} \cdot 4 = 20$$

$$\underline{7} \cdot 4 = 28$$

$$\underline{10} \cdot 8 = 80$$

$$\underline{1} \cdot 4 = 4$$

$$\underline{7} \cdot 8 = 56$$

$$\underline{9} \cdot 8 = 72$$

$$\underline{9} \cdot 2 = 18$$

$$\underline{8} \cdot 8 = 64$$

$$\underline{1} \cdot 2 = 2$$

$$\underline{6} \cdot 8 = 48$$

$$\underline{2} \cdot 2 = 4$$

$$\underline{8} \cdot 4 = 32$$

$$\underline{2} \cdot 8 = 16$$

$$\underline{10} \cdot 8 = 80$$

$$\underline{7} \cdot 4 = 28$$

$$\underline{9} \cdot 8 = 72$$

$$\underline{1} \cdot 8 = 8$$

$$\underline{10} \cdot 2 = 20$$

$$\underline{9} \cdot 2 = 18$$

$$\underline{5} \cdot 8 = 40$$

$$\underline{4} \cdot 2 = 8$$

$$\underline{5} \cdot 4 = 20$$

$$\underline{4} \cdot 8 = 32$$

$$\underline{4} \cdot 4 = 16$$

$$\underline{8} \cdot 8 = 64$$

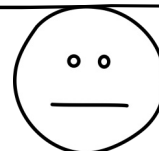
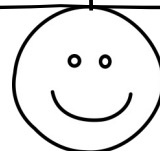
$$\underline{6} \cdot 8 = 48$$

$$\underline{5} \cdot 2 = 10$$

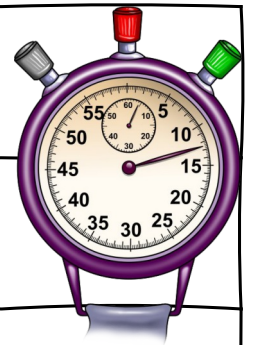
$$\underline{9} \cdot 4 = 36$$

$$\underline{7} \cdot 2 = 14$$

Anzahl richtiger Ergebnisse: _____



Mathe: Einmaleintraining (5er und 10er Reihe)



10 Minuten - Schnelltest Einmaleins

$9 \cdot \underline{4} = 36$

$6 \cdot \underline{2} = 12$

$5 \cdot \underline{8} = 40$

$2 \cdot \underline{4} = 8$

$7 \cdot \underline{2} = 14$

$10 \cdot \underline{4} = 40$

$4 \cdot \underline{2} = 8$

$2 \cdot \underline{2} = 4$

$4 \cdot \underline{4} = 16$

$6 \cdot \underline{8} = 48$

$4 \cdot \underline{8} = 32$

$8 \cdot \underline{2} = 16$

$1 \cdot \underline{8} = 8$

$9 \cdot \underline{8} = 72$

$7 \cdot \underline{4} = 28$

$1 \cdot \underline{2} = 2$

$10 \cdot \underline{8} = 80$

$9 \cdot \underline{2} = 18$

$4 \cdot \underline{8} = 32$

$6 \cdot \underline{8} = 48$

$9 \cdot \underline{2} = 18$

$6 \cdot \underline{4} = 24$

$1 \cdot \underline{8} = 8$

$5 \cdot \underline{4} = 20$

$3 \cdot \underline{4} = 12$

$9 \cdot \underline{4} = 36$

$8 \cdot \underline{4} = 32$

$2 \cdot \underline{4} = 8$

$8 \cdot \underline{2} = 16$

$3 \cdot \underline{8} = 24$

$9 \cdot \underline{8} = 72$

$2 \cdot \underline{2} = 4$

$7 \cdot \underline{4} = 28$

$5 \cdot \underline{8} = 40$

$3 \cdot \underline{2} = 6$

$7 \cdot \underline{8} = 56$

$2 \cdot \underline{8} = 16$

$6 \cdot \underline{8} = 48$

$7 \cdot \underline{8} = 56$

$1 \cdot \underline{4} = 4$

$8 \cdot \underline{2} = 16$

$9 \cdot \underline{8} = 72$

$9 \cdot \underline{4} = 36$

$1 \cdot \underline{2} = 2$

$6 \cdot \underline{4} = 24$

$1 \cdot \underline{8} = 8$

$4 \cdot \underline{8} = 32$

$7 \cdot \underline{4} = 28$

$6 \cdot \underline{2} = 12$

$4 \cdot \underline{4} = 16$

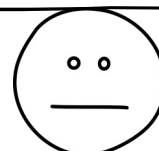
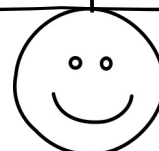
$3 \cdot \underline{4} = 12$

$2 \cdot \underline{4} = 8$

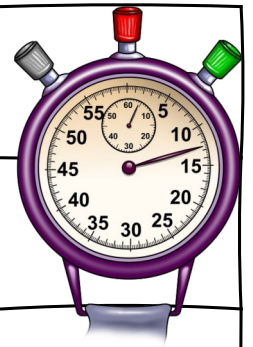
$9 \cdot \underline{2} = 18$

$7 \cdot \underline{2} = 14$

Anzahl richtiger Ergebnisse: _____



Mathe: Einmaleinsübung (5er und 10er Reihe)



10 Minuten - Schnelltest Einmaleins

$10 \cdot 4 = \underline{40}$

$1 \cdot 8 = \underline{8}$

$\underline{2} \cdot 2 = 4$

$\underline{3} \cdot 4 = 12$

$9 \cdot 4 = \underline{36}$

$9 \cdot \underline{8} = 72$

$\underline{4} \cdot 2 = 8$

$3 \cdot 8 = \underline{24}$

$7 \cdot \underline{4} = 28$

$7 \cdot \underline{2} = 14$

$5 \cdot 2 = \underline{10}$

$1 \cdot \underline{4} = 4$

$\underline{5} \cdot 4 = 20$

$\underline{10} \cdot 8 = 80$

$\underline{6} \cdot 8 = 48$

$6 \cdot \underline{4} = 24$

$2 \cdot 4 = \underline{8}$

$\underline{7} \cdot 8 = 56$

$\underline{4} \cdot 4 = 16$

$\underline{7} \cdot 2 = 14$

$2 \cdot 8 = \underline{16}$

$8 \cdot \underline{8} = 64$

$\underline{7} \cdot 8 = 56$

$9 \cdot 8 = \underline{72}$

$3 \cdot \underline{2} = 6$

$\underline{10} \cdot 4 = 40$

$1 \cdot \underline{2} = 2$

$1 \cdot \underline{4} = 4$

$\underline{5} \cdot 2 = 10$

$\underline{4} \cdot 2 = 8$

$9 \cdot \underline{2} = 18$

$\underline{10} \cdot 2 = 20$

$6 \cdot 2 = \underline{12}$

$5 \cdot \underline{4} = 20$

$2 \cdot \underline{2} = 4$

$\underline{4} \cdot 8 = 32$

$\underline{3} \cdot 8 = 24$

$6 \cdot \underline{4} = 24$

$\underline{10} \cdot 4 = 40$

$2 \cdot \underline{2} = 4$

$\underline{9} \cdot 8 = 72$

$10 \cdot 2 = \underline{20}$

$9 \cdot 2 = \underline{18}$

$7 \cdot 8 = \underline{56}$

$3 \cdot \underline{4} = 12$

$8 \cdot 8 = \underline{64}$

$1 \cdot 4 = \underline{4}$

$5 \cdot \underline{8} = 40$

$5 \cdot 2 = \underline{10}$

$2 \cdot 4 = \underline{8}$

$\underline{3} \cdot 2 = 6$

$\underline{4} \cdot 4 = 16$

$6 \cdot 8 = \underline{48}$

$8 \cdot \underline{2} = 16$

Anzahl richtiger Ergebnisse: _____

