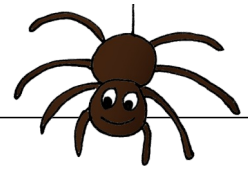
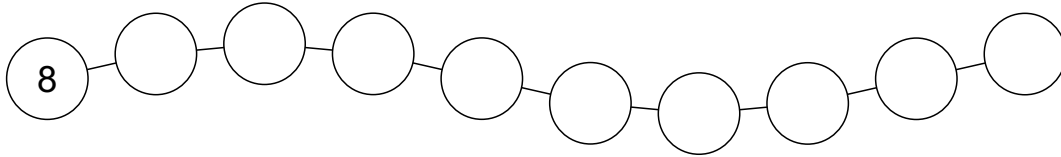


Einmaleins 8er Reihe



1 Schreibe die Zahlen der 8er Reihe auf.



2 $1 \cdot 8 = \square$



$2 \cdot 8 = \square$



$3 \cdot 8 = \square$



$4 \cdot 8 = \square$



$5 \cdot 8 = \square$



$6 \cdot 8 = \square$



$7 \cdot 8 = \square$



$8 \cdot 8 = \square$



$9 \cdot 8 = \square$



$10 \cdot 8 = \square$



3 $6 \cdot 8 = \underline{\quad}$

$6 \cdot \underline{\quad} = 48$

$\underline{\quad} \cdot 8 = 48$

$\underline{\quad} \cdot 8 = 80$

$2 \cdot 8 = \underline{\quad}$

$10 \cdot \underline{\quad} = 80$

$\underline{\quad} \cdot 8 = 72$

$1 \cdot \underline{\quad} = 8$

$4 \cdot 8 = \underline{\quad}$

$3 \cdot \underline{\quad} = 24$

$\underline{\quad} \cdot 8 = 24$

$\underline{\quad} \cdot 8 = 40$

$10 \cdot 8 = \underline{\quad}$

$5 \cdot \underline{\quad} = 40$

$\underline{\quad} \cdot 8 = 80$

$2 \cdot \underline{\quad} = 16$

$9 \cdot 8 = \underline{\quad}$

$9 \cdot \underline{\quad} = 72$

$\underline{\quad} \cdot 8 = 64$

$7 \cdot \underline{\quad} = 56$

$5 \cdot 8 = \underline{\quad}$

$7 \cdot \underline{\quad} = 56$

$\underline{\quad} \cdot 8 = 8$

$\underline{\quad} \cdot 8 = 24$

$3 \cdot 8 = \underline{\quad}$

$1 \cdot \underline{\quad} = 8$

$\underline{\quad} \cdot 8 = 56$

$8 \cdot 8 = \underline{\quad}$

$1 \cdot 8 = \underline{\quad}$

$2 \cdot \underline{\quad} = 16$

$\underline{\quad} \cdot 8 = 32$

$\underline{\quad} \cdot 8 = 48$

$8 \cdot 8 = \underline{\quad}$

$8 \cdot \underline{\quad} = 64$

$\underline{\quad} \cdot 8 = 40$

$4 \cdot \underline{\quad} = 32$

$7 \cdot 8 = \underline{\quad}$

$4 \cdot \underline{\quad} = 32$

$\underline{\quad} \cdot 8 = 16$

$\underline{\quad} \cdot 8 = 72$

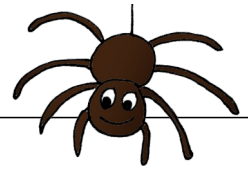
$6 \cdot 8 = \underline{\quad}$

$2 \cdot \underline{\quad} = 16$

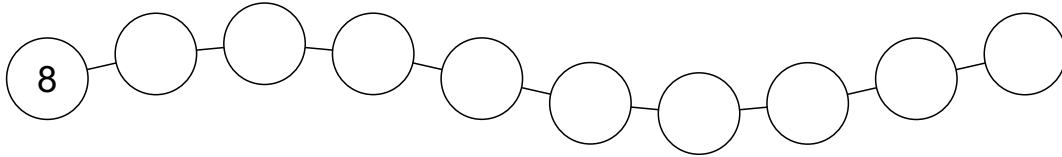
$\underline{\quad} \cdot 8 = 40$

$\underline{\quad} \cdot 8 = 72$











Einmaleins 8er Reihe



1 Schreibe die Zahlen der 8er Reihe auf.



2

$1 \cdot 8 = \square$	
$2 \cdot 8 = \square$	
$3 \cdot 8 = \square$	
$4 \cdot 8 = \square$	
$5 \cdot 8 = \square$	
$6 \cdot 8 = \square$	
$7 \cdot 8 = \square$	
$8 \cdot 8 = \square$	
$9 \cdot 8 = \square$	
$10 \cdot 8 = \square$	

3

$6 \cdot 8 = \underline{48}$	$6 \cdot \underline{8} = 48$	$\underline{6} \cdot 8 = 48$	$\underline{10} \cdot 8 = 80$
$2 \cdot 8 = \underline{16}$	$10 \cdot \underline{8} = 80$	$\underline{9} \cdot 8 = 72$	$1 \cdot \underline{8} = 8$
$4 \cdot 8 = \underline{32}$	$3 \cdot \underline{8} = 24$	$\underline{3} \cdot 8 = 24$	$\underline{5} \cdot 8 = 40$
$10 \cdot 8 = \underline{80}$	$5 \cdot \underline{8} = 40$	$\underline{10} \cdot 8 = 80$	$2 \cdot \underline{8} = 16$
$9 \cdot 8 = \underline{72}$	$9 \cdot \underline{8} = 72$	$\underline{8} \cdot 8 = 64$	$7 \cdot \underline{8} = 56$
$5 \cdot 8 = \underline{40}$	$7 \cdot \underline{8} = 56$	$\underline{1} \cdot 8 = 8$	$\underline{3} \cdot 8 = 24$
$3 \cdot 8 = \underline{24}$	$1 \cdot \underline{8} = 8$	$\underline{7} \cdot 8 = 56$	$8 \cdot 8 = \underline{64}$
$1 \cdot 8 = \underline{8}$	$2 \cdot \underline{8} = 16$	$\underline{4} \cdot 8 = 32$	$\underline{6} \cdot 8 = 48$
$8 \cdot 8 = \underline{64}$	$8 \cdot \underline{8} = 64$	$\underline{5} \cdot 8 = 40$	$4 \cdot \underline{8} = 32$
$7 \cdot 8 = \underline{56}$	$4 \cdot \underline{8} = 32$	$\underline{2} \cdot 8 = 16$	$\underline{9} \cdot 8 = 72$
$6 \cdot 8 = \underline{48}$	$2 \cdot \underline{8} = 16$	$\underline{5} \cdot 8 = 40$	$\underline{9} \cdot 8 = 72$